

TRANSPORT 051 - LK3604

STABILITET

Regelverk: Forskrift av 15.06.1987 nr. 504 om bygging av passasjer-, lasteskip og lektere

Innhold:

-
- *Lastekondisjon nr. 1; Lettskip*
 - *Lastekondisjon nr. 2-8, Ubemannet Lekter*

Lengde o.a: 22,20 meter

Transport 051 - LK 3604

Contents

Date: 25 MAR 2025

Description	Page
The list of conditions.....	2
Condition # 1/Intact ship. - Lettskip.....	3
Condition # 2/Intact ship. - 10%tk.-Hom.lastet,dk.last 2m over dekk.....	6
Condition # 3/Intact ship. - 10%tk.- Dekkslast 2m over dekk.....	9
Condition # 4/Intact ship. - 10%tk.-Hom.lastet,dk.last 1.5m over dekk.....	12
Condition # 5/Intact ship. - 10%tk.- Dekkslast 1.5m over dekk.....	15
Condition # 6/Intact ship. - 10%tk.-Hom.lastet,dk.last 1.0m over dekk.....	18
Condition # 7/Intact ship. - 10%tk.-Dekkslast 1.0m over dekk.....	21
Condition # 8/Intact ship. - 100%tk.-Dekkslast 0,5m over dekk.....	24

Transport 051 - LK 3604

The list of conditions

Intact ship

Date: 25 MAR 2025

No	Description	Changed	Displ.(t)	LCG(m)	VCG(m)	TCG(m)	Ext.cond	External cargo
1	Lettskip	25.03.2025	154.53	10.421	1.748			
2	10%tk.-Hom.lastet,dk.last 2m over dekk	25.03.2025	453.38	10.395	1.929	0.006		
3	10%tk.- Dekkslast 2m over dekk	25.03.2025	380.02	10.326	3.178	0.008		
4	10%tk.-Hom.lastet,dk.last 1.5m over dekk	25.03.2025	453.42	10.458	1.927	0.006		
5	10%tk.- Dekkslast 1.5m over dekk	25.03.2025	392.02	10.319	2.927	0.008		
6	10%tk.-Hom.lastet,dk.last 1.0m over dekk	25.03.2025	453.82	10.554	1.925	0.006		
7	10%tk.-Dekkslast 1.0m over dekk	25.03.2025	406.02	10.311	2.665	0.007		
8	100%tk.-Dekkslast 0,5m over dekk	25.03.2025	453.29	10.380	2.032	0.053		

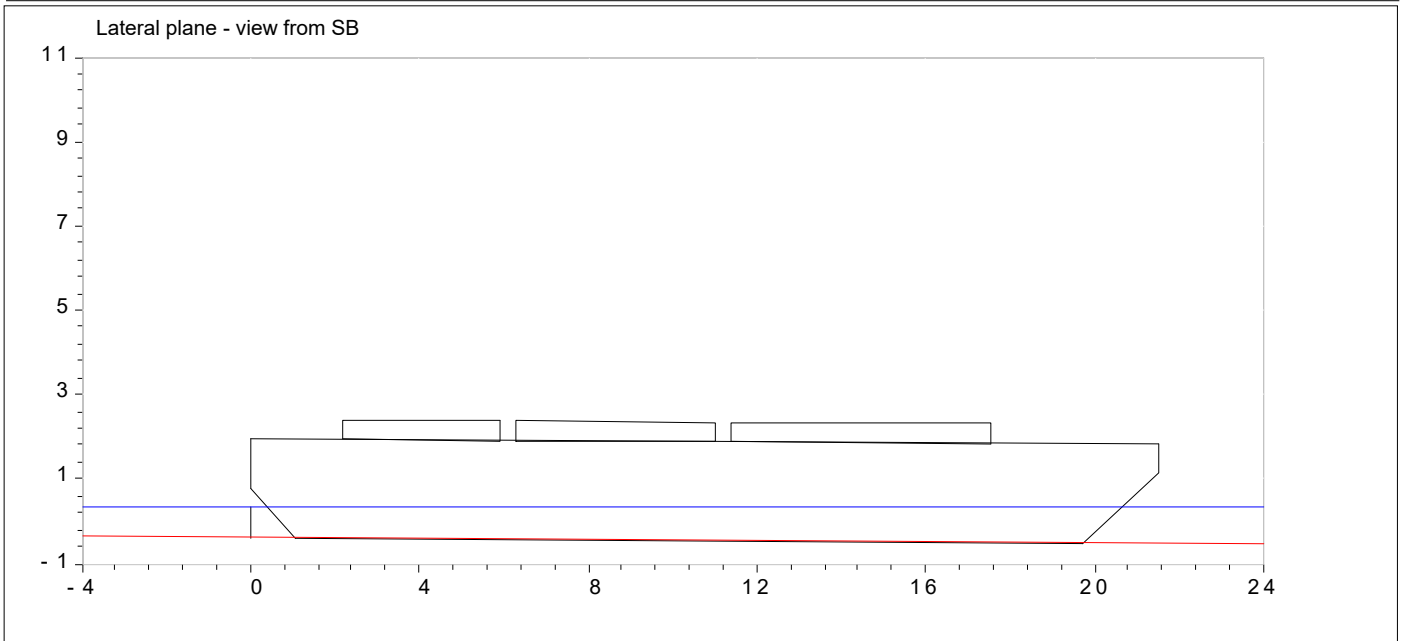
Transport 051 - LK 3604

Condition No: 1 :Lettskip

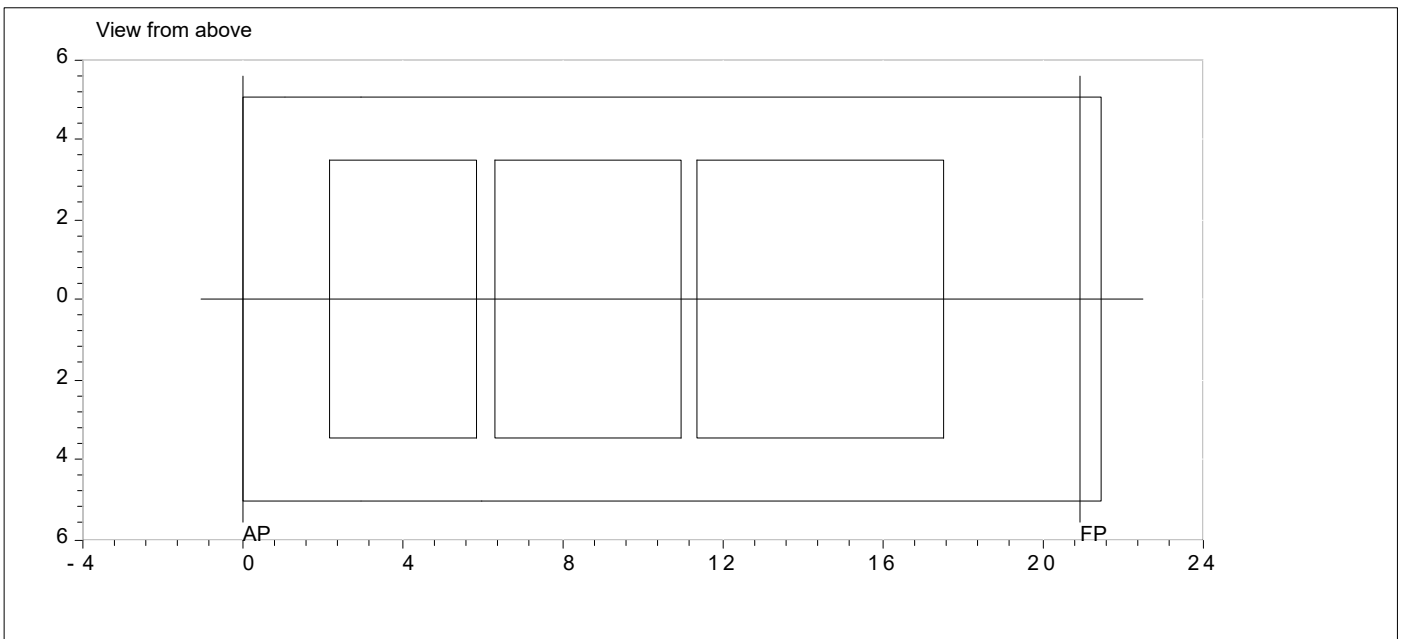
Water sp.gravity (t/m3) 1.0250 Intact ship SS=1-10, Shell=7

Date: 25 MAR 2025

App1=1-3, App2=0



DA= 0.732M MD= 2.350M(IN.S)
DF= 0.856M TR= -0.123M
DM= 0.794M Freeboard= 1.556M
Margin draft= 1.556M [Moulded max. draft - Mean draft]



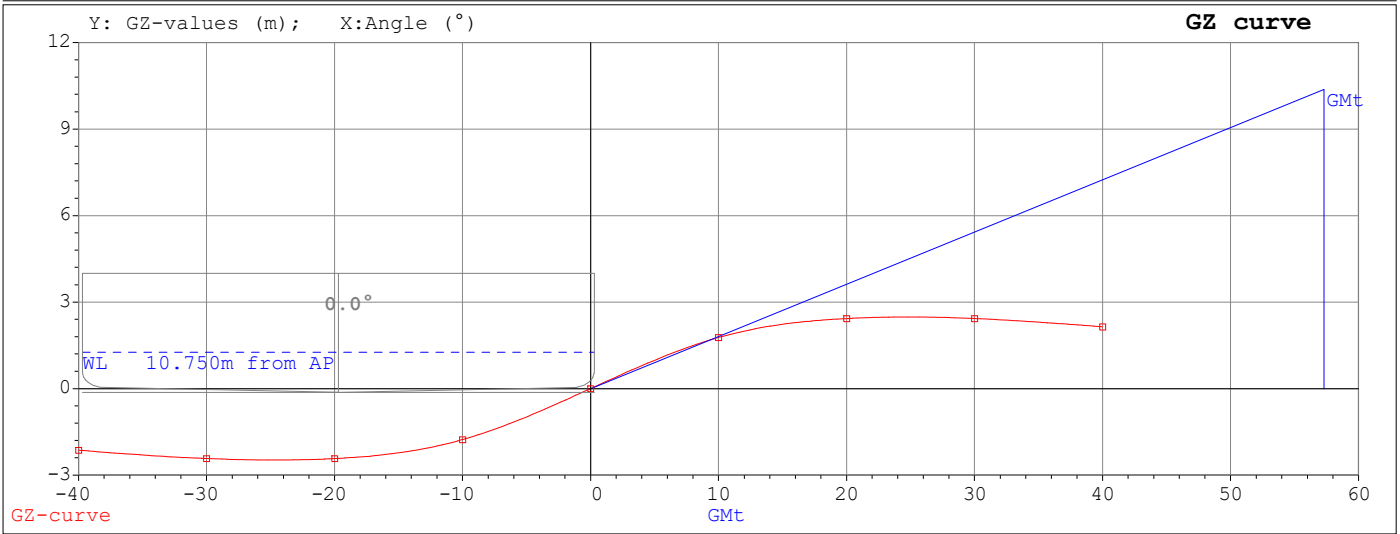
Transport 051 - LK 3604

Condition No: 1 :Lettskip

Water sp.gravity (t/m3) 1.0250 Intact ship SS=1-10, Shell=7

Date: 25 MAR 2025

App1=1-3, App2=0



Displ.=154.530T \LCG=10.421M \VCG=1.748M \TCG=0.000M
 GMT = 10.370M

Angles (-PS°)	GZ (M)	Angles (+SB°)	GZ (M)
0.0 Equilibrium		0.0 Equilibrium	
-10.0	-1.770	10.0	1.770
-20.0	-2.429	20.0	2.429
-24.8	-2.481*Max*	24.8	2.481*Max*
-30.0	-2.429	30.0	2.429
-40.0	-2.140	40.0	2.140

Angles (-PS°)	Area (MR)
0.0 > -12.5	0.249
0.0 > -20	0.547
0.0 > -30	0.977
0.0 > -40	1.378
-30.0 > -40.0	0.401
0.0 > -24.8	0.753

Angles (+SB°)	Area (MR)
0.0 > 12.5	0.249
0.0 > 20	0.547
0.0 > 30	0.977
0.0 > 40	1.378
30.0 > 40.0	0.401
0.0 > 24.8	0.753

STABILITY CRITERIA: (Column WC="Worst Case" use: SB=SB, PS=PS or SP=SB&PS)

Set name: INTACT: Barge (unmanned)

Comment	Left/Expression	Value	R	Right/Req.	WC	OK/Not
Area (HA to GZMaxAngle)	> GetGZArea(HeelAngle,Min(GZMaxAngle,FloodAngle 3))	0.7529	>=	0.0530	SP	OK

Transport 051 - LK 3604

Condition No: 2 : 10%tk.-Hom.lastet,dk.last 2m over dekk

Water sp.gravity (t/m3) 1.0250 Intact ship SS=1-10, Shell=7

Date: 25 MAR 2025

App1=1-3, App2=0

Pos	Description	TNo	TCode	DWc	Vol. (m3)	Spg. (t/m3)	Weight (t)	LCG (m)	VCG (m)	TCG (m)	Spg*IT (t*m)	Length (m)
1	10%BRO/Ball.			BA	12.49	1.0000	12.49	12.997	0.339	0.234	6.8	1.00
2	Dekkslast			DKL	60.70	1.0000	60.70	12.100	4.350	0.000	0.0	1.00
3	Homogen last			LA	225.66	1.0000	225.66	9.775	1.460	0.000	0.0	1.00

Dead weight: 298.85 10.382 2.000 0.010 6.8

Light ship: 154.53 10.421 1.748 0.000

TOTAL for the condition: 453.38 10.395 1.929* 0.006 ITc= 0.015

Description	Filling (%)	DWc	Volume (m3)	Spc.gr (t/m3)	Weight (t)	Description	Filling (%)	DWc	Volume (m3)	Spc.gr (t/m3)	Weight (t)
BRO/Ballast	10.0	BA	12.5	1.0000	12.5	Dekkslast	25.4	DKL	60.7	1.0000	60.7
Lasterom	100.0	LA	225.7	1.0000	225.7						

Condition's VCG (m): 1.929* (1.914 + 0.015) GMT (m): 3.402 KMT (m): 5.332

WATERLINE	DA (m)	DF (m)	MEAN (DA+DF)/2	TRIM (DA-DF)	HEELING (°SB/PS)	TPC (t/cm)	MCT1CM (tm/cm)	Wet Surf (m2)
Draft at MARK:	2.186	2.114						
Draft above BASE:	2.186	2.114	2.150	0.072	0.12 SB	2.24	4.12	295.94

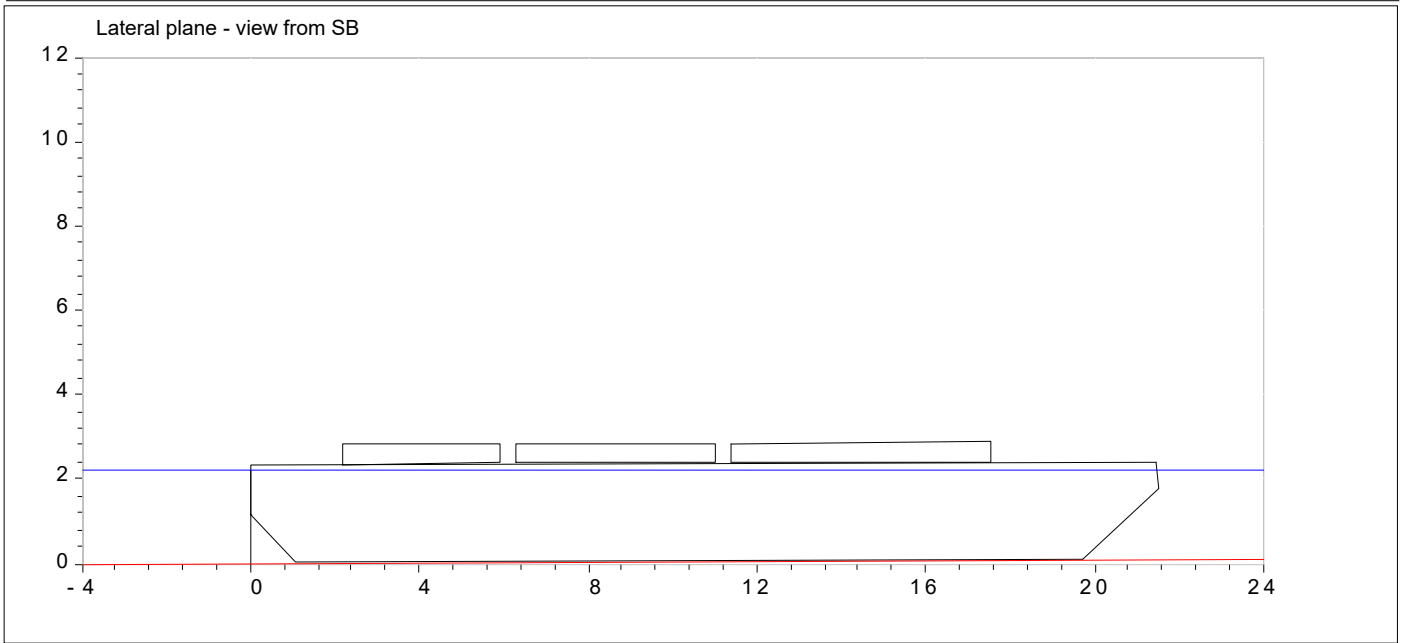
Transport 051 - LK 3604

Condition No: 2 : 10%tk.-Hom.lastet,dk.last 2m over dekk

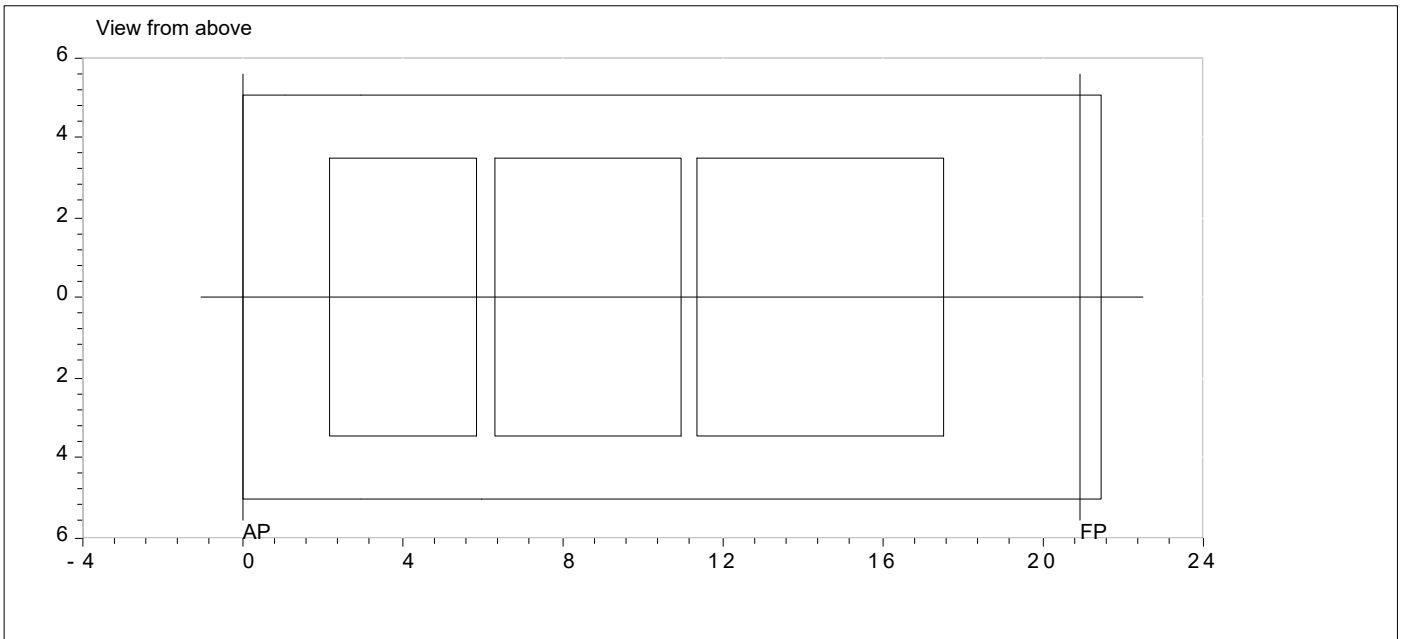
Water sp.gravity (t/m3) 1.0250 Intact ship SS=1-10, Shell=7

Date: 25 MAR 2025

App1=1-3, App2=0



DA= 2.186M MD= 2.350M(IN.S)
 DF= 2.114M TR= 0.072M
 DM= 2.150M Freeboard= 0.200M
 Margin draft= 0.200M [Moulded max. draft - Mean draft]



BA	(1.0000T/M3)	12.49T BRO/Ballast
DKL	(1.0000T/M3)	60.70T Dekkslast
LA	(1.0000T/M3)	225.66T Lasterom

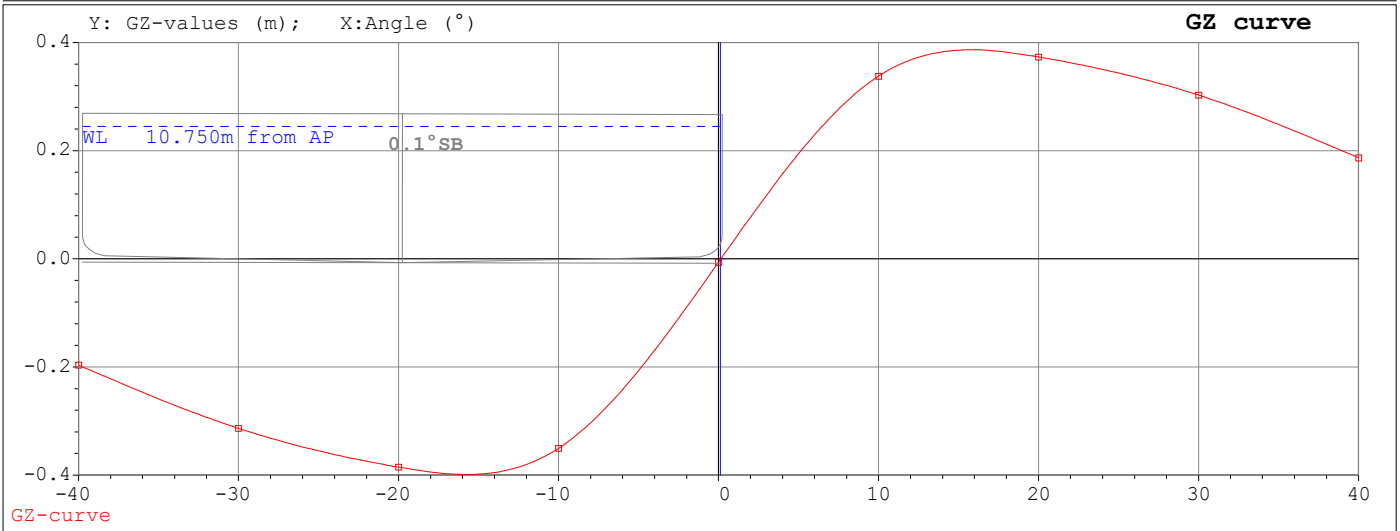
Transport 051 - LK 3604

Condition No: 2 :10%tk.-Hom.lastet,dk.last 2m over dekk

Water sp.gravity (t/m3) 1.0250 Intact ship SS=1-10, Shell=7

Date: 25 MAR 2025

App1=1-3, App2=0



Displ.=453.380T \LCG=10.395M \VCG=1.929M \TCG=0.006M
 GMT = 3.402M

Angles (-PS°)	GZ (M)	Angles (+SB°)	GZ (M)
0.0	-0.006	0.0	-0.006
-10.0	-0.350	0.1	Equilibrium
-15.7	-0.399*Max*	10.0	0.338
-20.0	-0.385	15.8	0.387*Max*
-30.0	-0.314	20.0	0.373
-40.0	-0.197	30.0	0.303
		40.0	0.187

Angles (-PS°)	Area (MR)
0.1 > -20	0.102
0.1 > -30	0.164
0.1 > -40	0.209
-30.0 > -40.0	0.045
0.1 > -15.7	0.073
Angles (+SB°)	Area (MR)
0.1 > 20	0.098
0.1 > 30	0.157
0.1 > 40	0.201
30.0 > 40.0	0.043
0.1 > 15.8	0.070

STABILITY CRITERIA: (Column WC="Worst Case" use: SB=SB, PS=PS or SP=SB&PS)
 Set name: INTACT: Barge (unmanned)

 Comment | Left/Expression | Value | R | Right/Req. | WC | OK/Not

Area (HA to GZMaxAngle) >|GetGZArea(HeelAngle,Min(GZMaxAngle,FloodAngle
 3))

0.0700 >= 0.0530 SB OK

Transport 051 - LK 3604

Condition No: 3 : 10%tk.- Dekkslast 2m over dekk

Water sp.gravity (t/m3) 1.0250 Intact ship SS=1-10, Shell=7

Date: 25 MAR 2025

App1=1-3, App2=0

Pos	Description	TNo	TCode	DWc	Vol. (m3)	Spg. (t/m3)	Weight (t)	LCG (m)	VCG (m)	TCG (m)	Spg*IT (t*m)	Length (m)
1	10%BRO/Ball.			BA	12.49	1.0000	12.49	12.997	0.339	0.234	6.8	1.00
2	Dekkslast			DKL	213.00	1.0000	213.00	10.100	4.350	0.000	0.0	1.00

Dead weight: 225.49 10.260 4.128 0.013 6.8

Light ship: 154.53 10.421 1.748 0.000

TOTAL for the condition: 380.02 10.326 3.178* 0.008 ITc= 0.018

Description	Filling (%)	DWc	Volume (m3)	Spc.gr (t/m3)	Weight (t)	Description	Filling (%)	DWc	Volume (m3)	Spc.gr (t/m3)	Weight (t)
BRO/Ballast	10.0	BA	12.5	1.0000	12.5	Dekkslast	89.1	DKL	213.0	1.0000	213.0

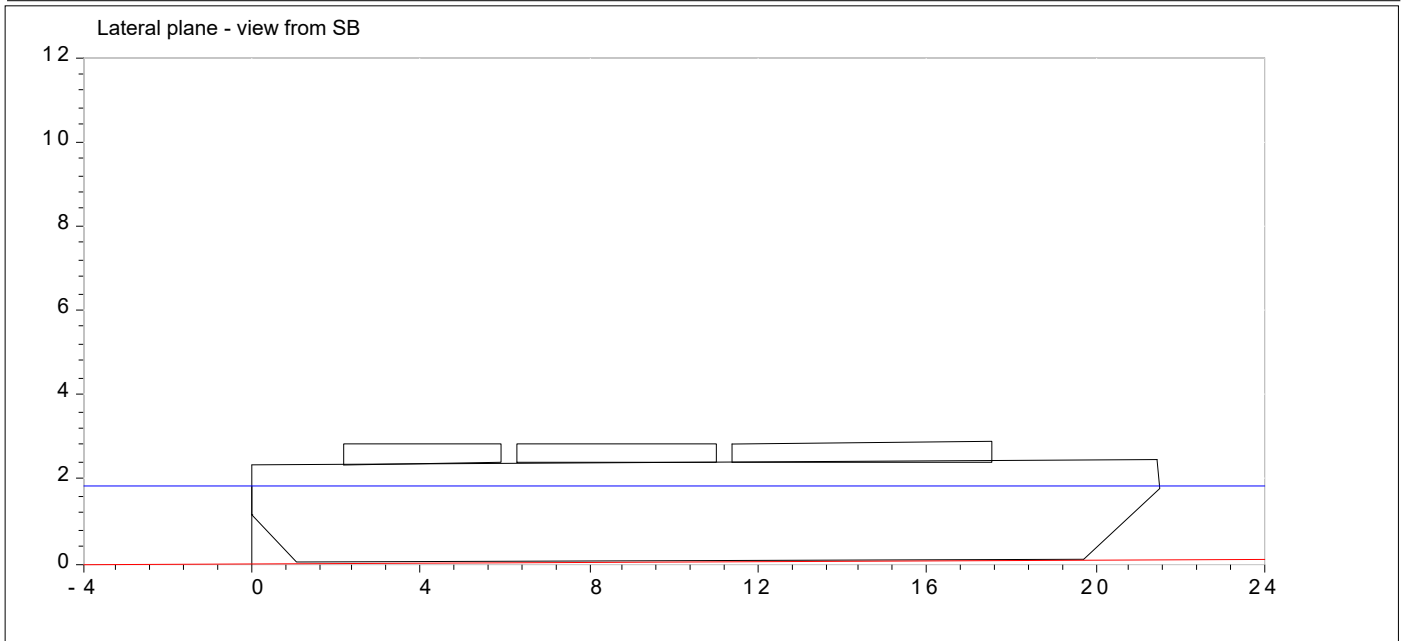
Condition's VCG (m): 3.178* (3.160 + 0.018) GMT (m): 2.790 KMT (m): 5.968

WATERLINE	DA (m)	DF (m)	MEAN (DA+DF)/2	TRIM (DA-DF)	HEELING (°SB/PS)	TPC (t/cm)	MCT1CM (tm/cm)	Wet Surf (m2)
Draft at MARK:	1.862	1.785						
Draft above BASE:	1.862	1.785	1.823	0.077	0.16 SB	2.24	4.12	281.83

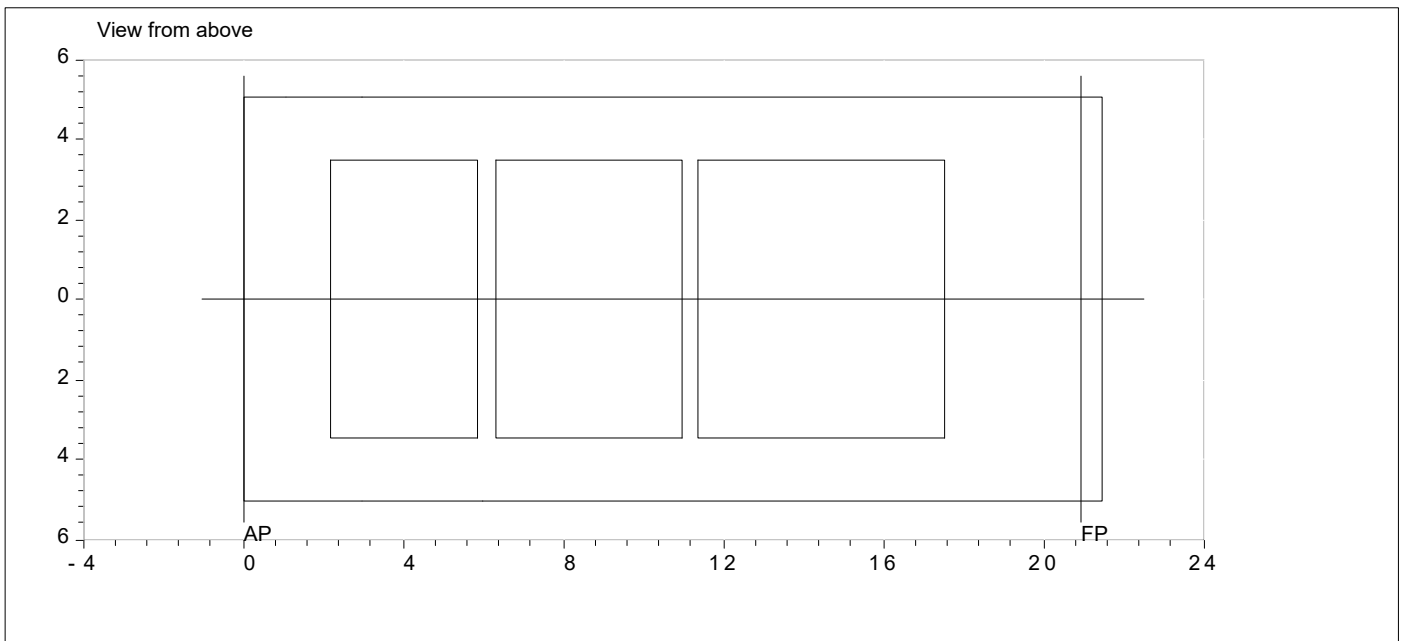
Transport 051 - LK 3604

Condition No: 3 : 10%tk.- Dekkslast 2m over dekk
 Water sp.gravity (t/m3) 1.0250 Intact ship SS=1-10, Shell=7
 App1=1-3, App2=0

Date: 25 MAR 2025



DA= 1.862M MD= 2.350M(IN.S)
 DF= 1.785M TR= 0.077M
 DM= 1.823M Freeboard= 0.527M
 Margin draft= 0.527M [Moulded max. draft - Mean draft]

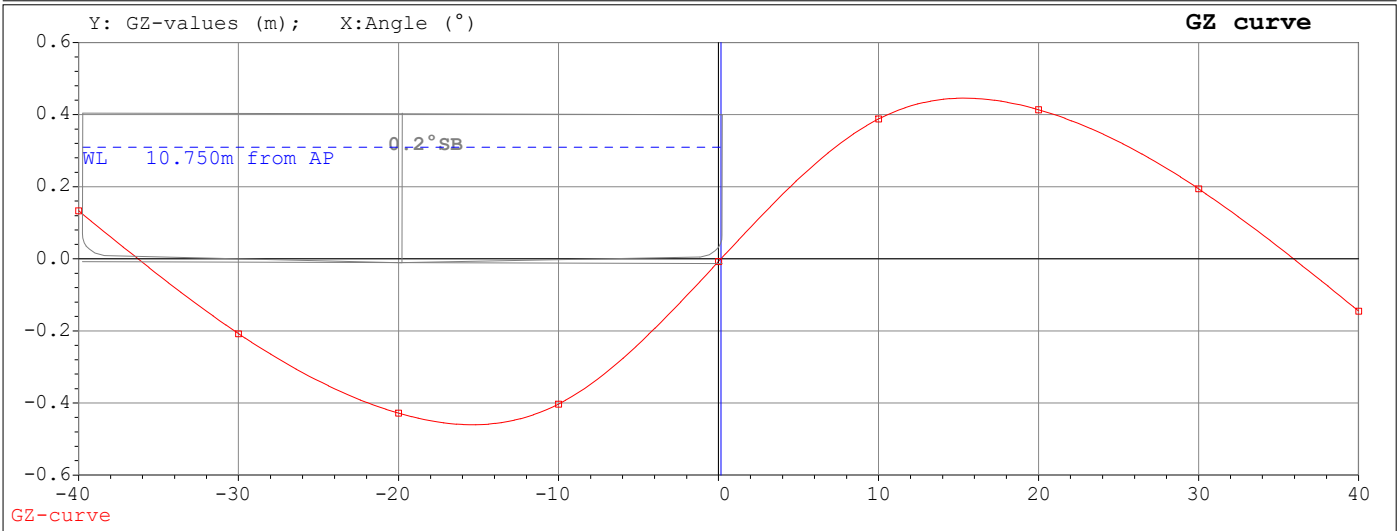


BA	(1.0000T/M3)	12.49T BRO/Ballast
DKL	(1.0000T/M3)	213.00T Dekkslast

Transport 051 - LK 3604

Condition No: 3 :10%tk.- Dekkslast 2m over dekk
 Water sp.gravity (t/m3) 1.0250 Intact ship SS=1-10, Shell=7
 App1=1-3, App2=0

Date: 25 MAR 2025



Displ.=380.020T \ LCG=10.326M \ VCG=3.178M \ TCG=0.008M
 GMT = 2.790M

Angles (-PS°)	GZ (M)	Angles (+SB°)	GZ (M)
0.0	-0.008	0.0	-0.008
-10.0	-0.403	0.2	Equilibrium
-15.3	-0.460*Max*	10.0	0.388
-20.0	-0.428	15.4	0.446*Max*
-30.0	-0.208	20.0	0.414
-40.0	0.133	30.0	0.194
		40.0	-0.145

Angles (-PS°)	Area (MR)
0.2 > -20	0.117
0.2 > -30	0.175
0.2 > -40	0.183
-30.0 > -40.0	0.007
0.2 > -15.3	0.081
Angles (+SB°)	Area (MR)
0.2 > 20	0.112
0.2 > 30	0.167
0.2 > 40	0.173
30.0 > 40.0	0.005
0.2 > 15.4	0.077

STABILITY CRITERIA: (Column WC="Worst Case" use: SB=SB, PS=PS or SP=SB&PS)
 Set name: INTACT: Barge (unmanned)

Comment	Left/Expression	Value	R	Right/Req. WC	OK/Not
---------	-----------------	-------	---	-----------------	--------

Area (HA to GZMaxAngle) >|GetGZArea(HeelAngle,Min(GZMaxAngle,FloodAngle
 3))

0.0772 >= 0.0530 SB OK

Transport 051 - LK 3604

Condition No: 4 : 10%tk.-Hom.lastet,dk.last 1.5m over dekk

Water sp.gravity (t/m3) 1.0250 Intact ship SS=1-10, Shell=7

Date: 25 MAR 2025

App1=1-3, App2=0

Pos	Description	TNo	TCode	DWc	Vol. (m3)	Spg. (t/m3)	Weight (t)	LCG (m)	VCG (m)	TCG (m)	Spg*IT (t*m)	Length (m)
1	10%BRO/Ball.			BA	12.49	1.0000	12.49	12.997	0.339	0.234	6.8	1.00
2	Dekkslast			DKL	73.00	1.0000	73.00	12.100	3.850	0.000	0.0	1.00
3	Homogen last			LA	213.40	1.0000	213.40	9.775	1.460	0.000	0.0	1.00

Dead weight: 298.89 10.477 1.997 0.010 6.8

Light ship: 154.53 10.421 1.748 0.000

TOTAL for the condition: 453.42 10.458 1.927* 0.006 ITc= 0.015

Description	Filling (%)	DWc	Volume (m3)	Spc.gr (t/m3)	Weight (t)	Description	Filling (%)	DWc	Volume (m3)	Spc.gr (t/m3)	Weight (t)
BRO/Ballast	10.0	BA	12.5	1.0000	12.5	Dekkslast	30.5	DKL	73.0	1.0000	73.0
Lasterom	94.6	LA	213.4	1.0000	213.4						

Condition's VCG (m): 1.927* (1.912 + 0.015) GMT (m): 3.404 KMT (m): 5.331

WATERLINE	DA (m)	DF (m)	MEAN (DA+DF)/2	TRIM (DA-DF)	HEELING (°SB/PS)	TPC (t/cm)	MCT1CM (tm/cm)	Wet Surf (m2)
Draft at MARK:	2.150	2.150						
Draft above BASE:	2.150	2.150	2.150	0.000	0.12 SB	2.24	4.12	295.95

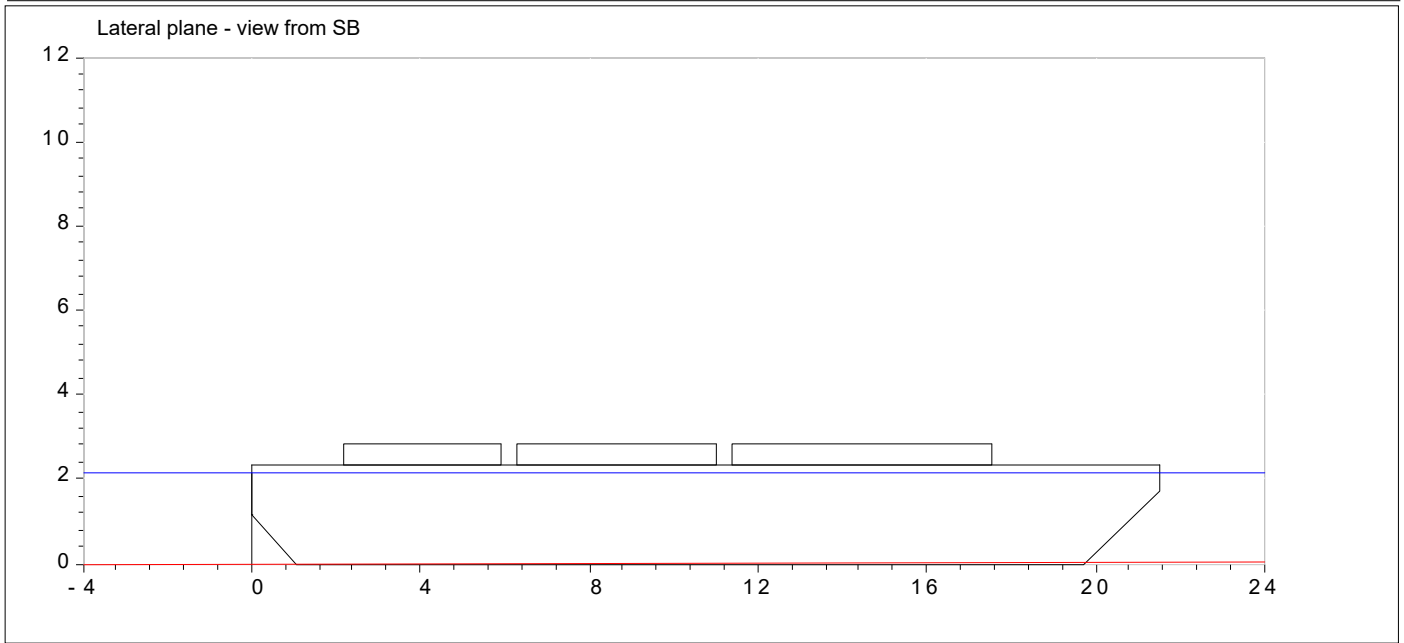
Transport 051 - LK 3604

Condition No: 4 : 10%tk.-Hom.lastet,dk.last 1.5m over dekk

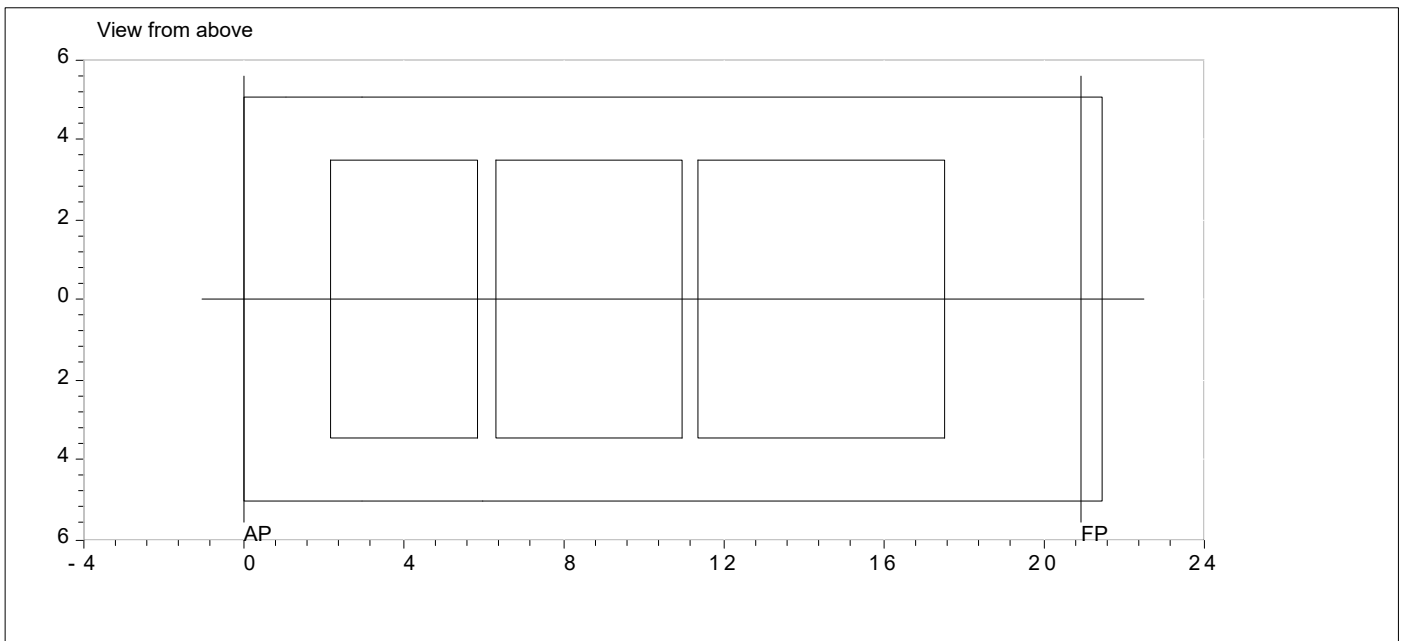
Water sp.gravity (t/m3) 1.0250 Intact ship SS=1-10, Shell=7

Date: 25 MAR 2025

App1=1-3, App2=0



DA= 2.150M MD= 2.350M(IN.S)
 DF= 2.150M TR= 0.000M
 DM= 2.150M Freeboard= 0.200M
 Margin draft= 0.200M [Moulded max. draft - Mean draft]



BA	(1.0000T/M3)	12.49T BRO/Ballast
DKL	(1.0000T/M3)	73.00T Dekkslast
LA	(1.0000T/M3)	213.40T Lasterom

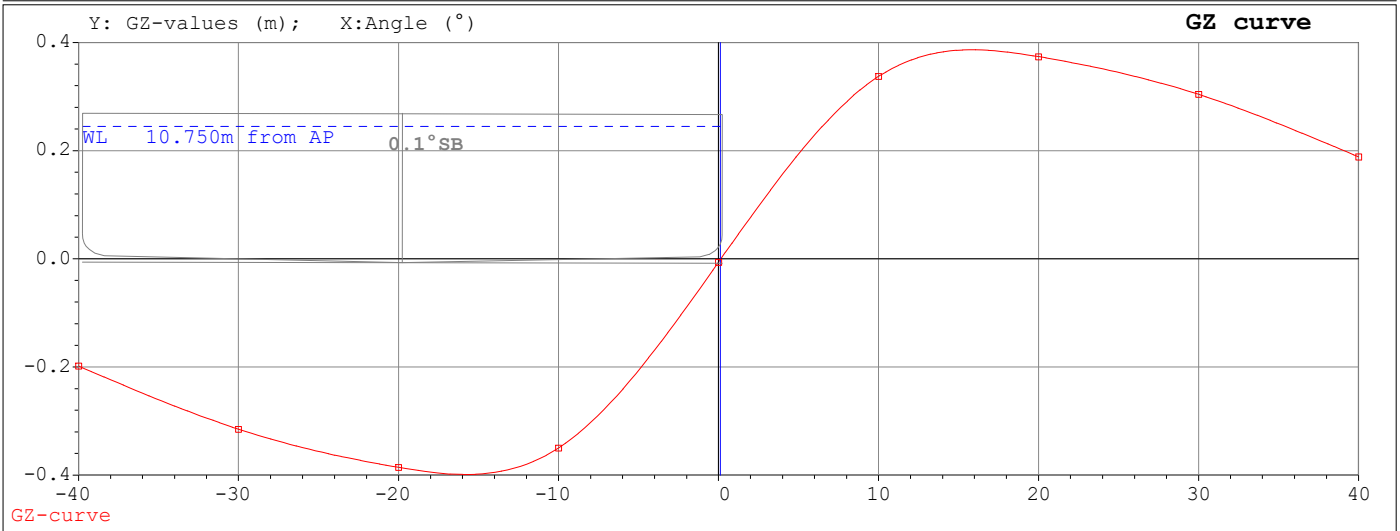
Transport 051 - LK 3604

Condition No: 4 :10%tk.-Hom.lastet,dk.last 1.5m over dekk

Water sp.gravity (t/m3) 1.0250 Intact ship SS=1-10, Shell=7

Date: 25 MAR 2025

App1=1-3, App2=0



Displ.=453.420T \LCG=10.458M \VCG=1.927M \TCG=0.006M
 GMT = 3.404M

Angles (-PS°)	GZ (M)	Angles (+SB°)	GZ (M)
0.0	-0.006	0.0	-0.006
-10.0	-0.350	0.1	Equilibrium
-15.8	-0.399*Max*	10.0	0.337
-20.0	-0.386	15.8	0.387*Max*
-30.0	-0.315	20.0	0.374
-40.0	-0.198	30.0	0.304
		40.0	0.188

Angles (-PS°)	Area (MR)
0.1 > -20	0.102
0.1 > -30	0.164
0.1 > -40	0.209
-30.0 > -40.0	0.045
0.1 > -15.8	0.073
Angles (+SB°)	Area (MR)
0.1 > 20	0.098
0.1 > 30	0.158
0.1 > 40	0.201
30.0 > 40.0	0.043
0.1 > 15.8	0.070

STABILITY CRITERIA: (Column WC="Worst Case" use: SB=SB, PS=PS or SP=SB&PS)
 Set name: INTACT: Barge (unmanned)

 Comment | Left/Expression | Value | R | Right/Req. | WC | OK/Not

Area (HA to GZMaxAngle) >|GetGZArea(HeelAngle,Min(GZMaxAngle,FloodAngle
 3))

0.0699 >= 0.0530 SB OK

Transport 051 - LK 3604

Condition No: 5 :10%tk.- Dekkslast 1.5m over dekk
 Water sp.gravity (t/m3) 1.0250 Intact ship SS=1-10, Shell=7
 App1=1-3, App2=0

Date: 25 MAR 2025

Pos	Description	TNo	TCode	DWc	Vol. (m3)	Spg. (t/m3)	Weight (t)	LCG (m)	VCG (m)	TCG (m)	Spg*IT (t*m)	Length (m)
1	10%BRO/Ball.			BA	12.49	1.0000	12.49	12.997	0.339	0.234	6.8	1.00
2	Dekkslast			DKL	225.00	1.0000	225.00	10.100	3.850	0.000	0.0	1.00

Dead weight: 237.49 10.252 3.665 0.012 6.8

Light ship: 154.53 10.421 1.748 0.000

TOTAL for the condition: 392.02 10.319 2.927* 0.007 ITc= 0.017

Description	Filling (%)	DWc	Volume (m3)	Spc.gr (t/m3)	Weight (t)	Description	Filling (%)	DWc	Volume (m3)	Spc.gr (t/m3)	Weight (t)
BRO/Ballast	10.0	BA	12.5	1.0000	12.5	Dekkslast	94.1	DKL	225.0	1.0000	225.0

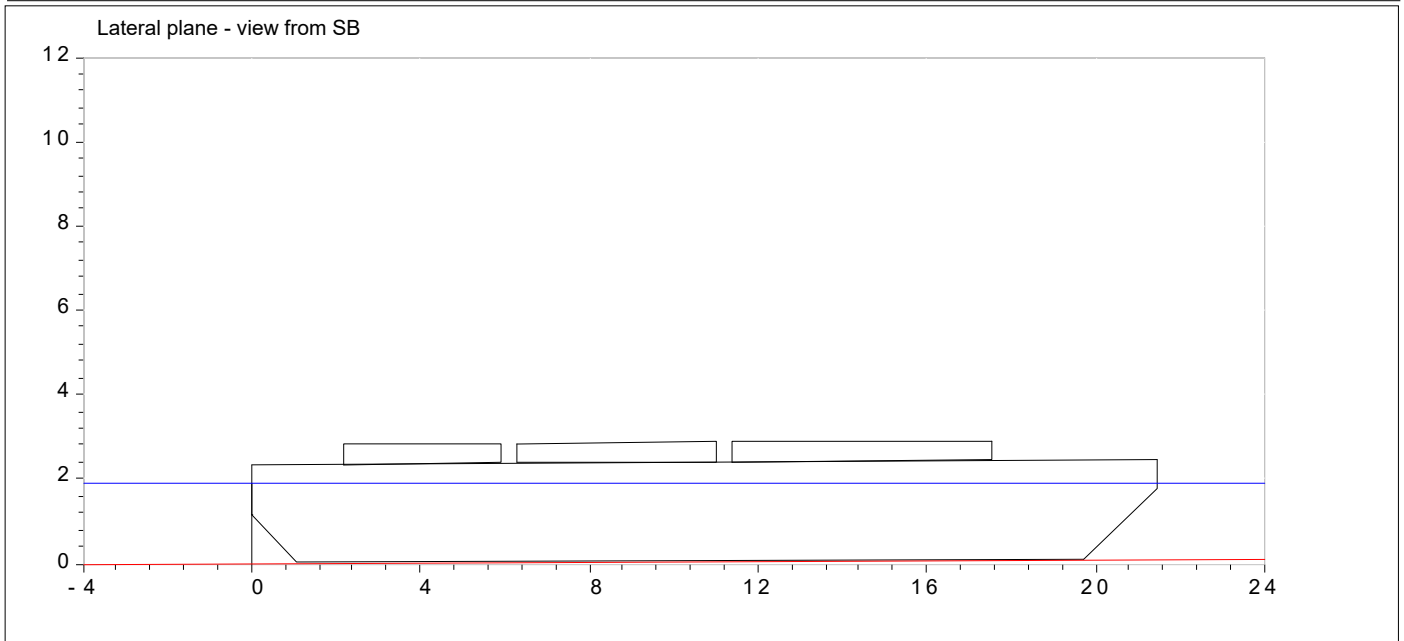
Condition's VCG (m): 2.927* (2.910 + 0.017) GMT (m): 2.918 KMT (m): 5.845

WATERLINE	DA (m)	DF (m)	MEAN (DA+DF)/2	TRIM (DA-DF)	HEELING (°SB/PS)	TPC (t/cm)	MCT1CM (tm/cm)	Wet Surf (m2)
Draft at MARK:	1.925	1.829						
Draft above BASE:	1.925	1.829	1.877	0.097	0.14 SB	2.24	4.12	284.15

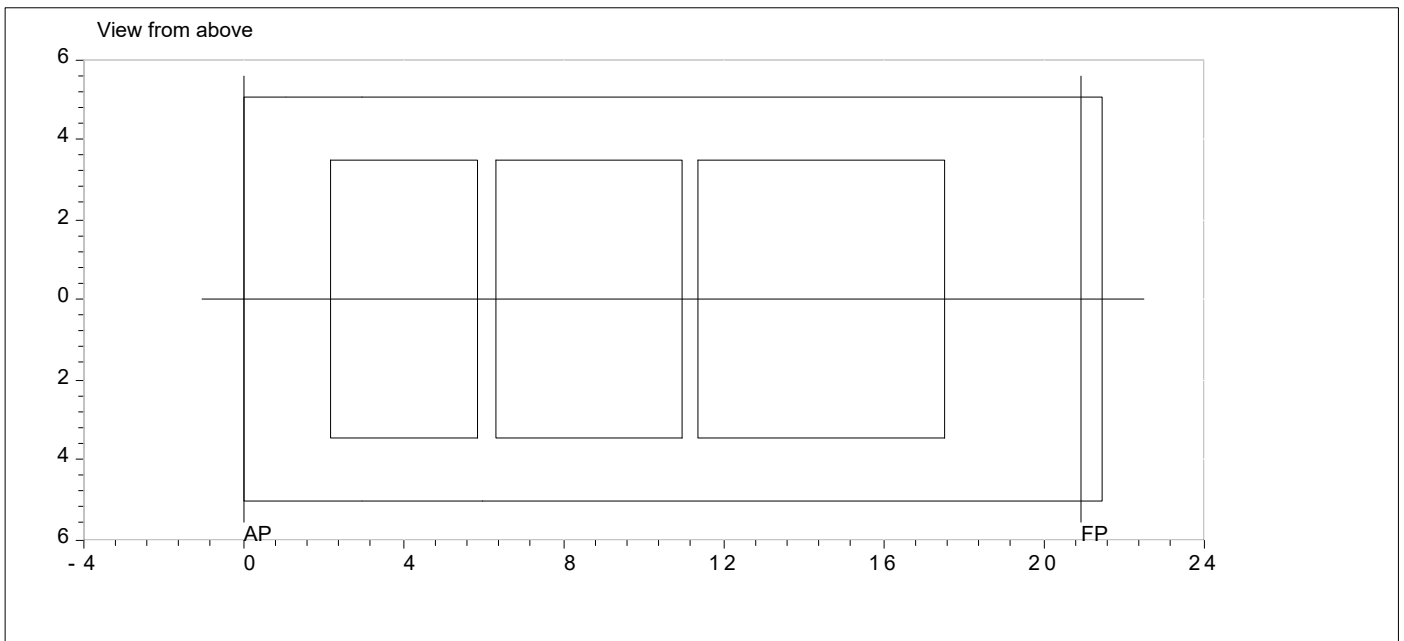
Transport 051 - LK 3604

Condition No: 5 : 10%tk.- Dekkslast 1.5m over dekk
 Water sp.gravity (t/m3) 1.0250 Intact ship SS=1-10, Shell=7
 App1=1-3, App2=0

Date: 25 MAR 2025



DA= 1.925M MD= 2.350M(IN.S)
 DF= 1.829M TR= 0.097M
 DM= 1.877M Freeboard= 0.473M
 Margin draft= 0.473M [Moulded max. draft - Mean draft]

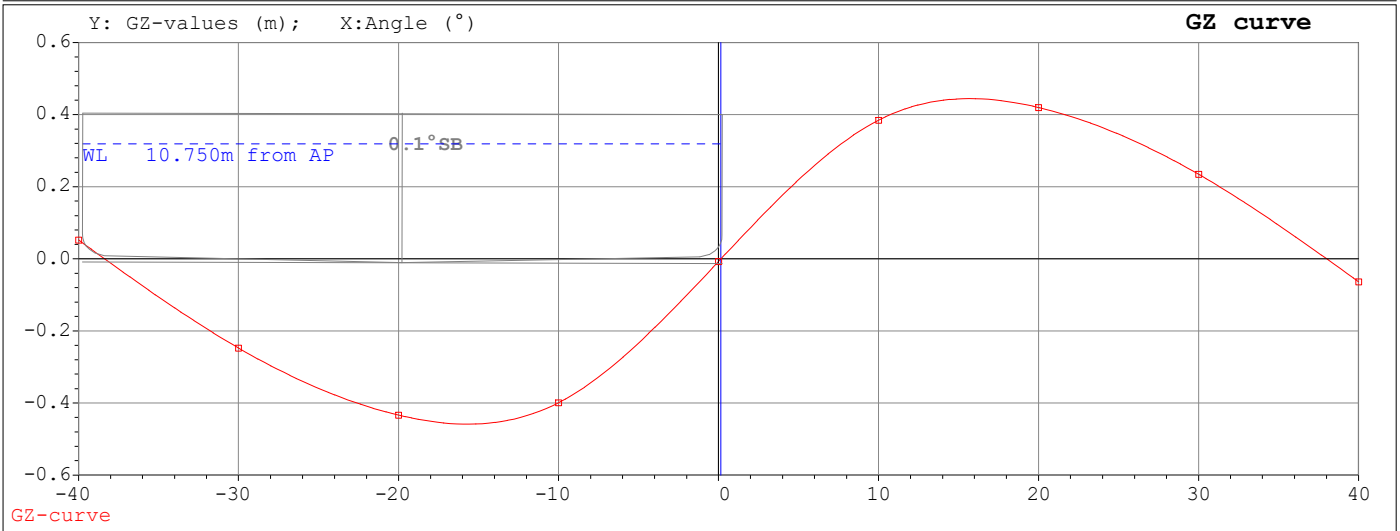


	BA (1.0000T/M3)	12.49T BRO/Ballast
	DKL (1.0000T/M3)	225.00T Dekkslast

Transport 051 - LK 3604

Condition No: 5 :10%tk.- Dekkslast 1.5m over dekk
 Water sp.gravity (t/m3) 1.0250 Intact ship SS=1-10, Shell=7
 App1=1-3, App2=0

Date: 25 MAR 2025



Displ.=392.020T \LCG=10.319M \VCG=2.927M \TCG=0.008M
 GMT = 2.918M

Angles (-PS°)	GZ (M)	Angles (+SB°)	GZ (M)
0.0	-0.008	0.0	-0.008
-10.0	-0.399	0.1	Equilibrium
-15.7	-0.459*Max*	10.0	0.384
-20.0	-0.434	15.7	0.444*Max*
-30.0	-0.248	20.0	0.420
-40.0	0.052	30.0	0.235
		40.0	-0.063

Angles (-PS°)	Area (MR)
0.1 > -20	0.117
0.1 > -30	0.178
0.1 > -40	0.196
-30.0 > -40.0	0.018
0.1 > -15.7	0.082

Angles (+SB°)	Area (MR)
0.1 > 20	0.111
0.1 > 30	0.171
0.1 > 40	0.187
30.0 > 40.0	0.016
0.1 > 15.7	0.078

STABILITY CRITERIA: (Column WC="Worst Case" use: SB=SB, PS=PS or SP=SB&PS)
 Set name: INTACT: Barge (unmanned)

 Comment | Left/Expression | Value | R | Right/Req. | WC | OK/Not

Area (HA to GZMaxAngle) >|GetGZArea(HeelAngle,Min(GZMaxAngle,FloodAngle
 3))

0.0784 >= 0.0530 SB OK

Transport 051 - LK 3604

Condition No: 6 : 10%tk.-Hom.lastet,dk.last 1.0m over dekk

Water sp.gravity (t/m3) 1.0250 Intact ship SS=1-10, Shell=7

Date: 25 MAR 2025

App1=1-3, App2=0

Pos	Description	TNo	TCode	DWc	Vol. (m3)	Spg. (t/m3)	Weight (t)	LCG (m)	VCG (m)	TCG (m)	Spg*IT (t*m)	Length (m)
1	10%BRO/Ball.			BA	12.49	1.0000	12.49	12.997	0.339	0.234	6.8	1.00
2	Dekkslast			DKL	91.80	1.0000	91.80	12.100	3.350	0.000	0.0	1.00
3	Homogen last			LA	195.00	1.0000	195.00	9.775	1.460	0.000	0.0	1.00

Dead weight: 299.29 10.623 1.993 0.010 6.8

Light ship: 154.53 10.421 1.748 0.000

TOTAL for the condition: 453.82 10.554 1.925* 0.006 ITc= 0.015

Description	Filling (%)	DWc	Volume (m3)	Spc.gr (t/m3)	Weight (t)	Description	Filling (%)	DWc	Volume (m3)	Spc.gr (t/m3)	Weight (t)
BRO/Ballast	10.0	BA	12.5	1.0000	12.5	Dekkslast	38.4	DKL	91.8	1.0000	91.8
Lasterom	86.4	LA	195.0	1.0000	195.0						

Condition's VCG (m): 1.925* (1.910 + 0.015) GMT (m): 3.404 KMT (m): 5.328

WATERLINE	DA (m)	DF (m)	MEAN (DA+DF)/2	TRIM (DA-DF)	HEELING (°SB/PS)	TPC (t/cm)	MCT1CM (tm/cm)	Wet Surf (m2)
Draft at MARK:	2.094	2.205						
Draft above BASE:	2.094	2.205	2.150	-0.111	0.12 SB	2.24	4.12	296.02

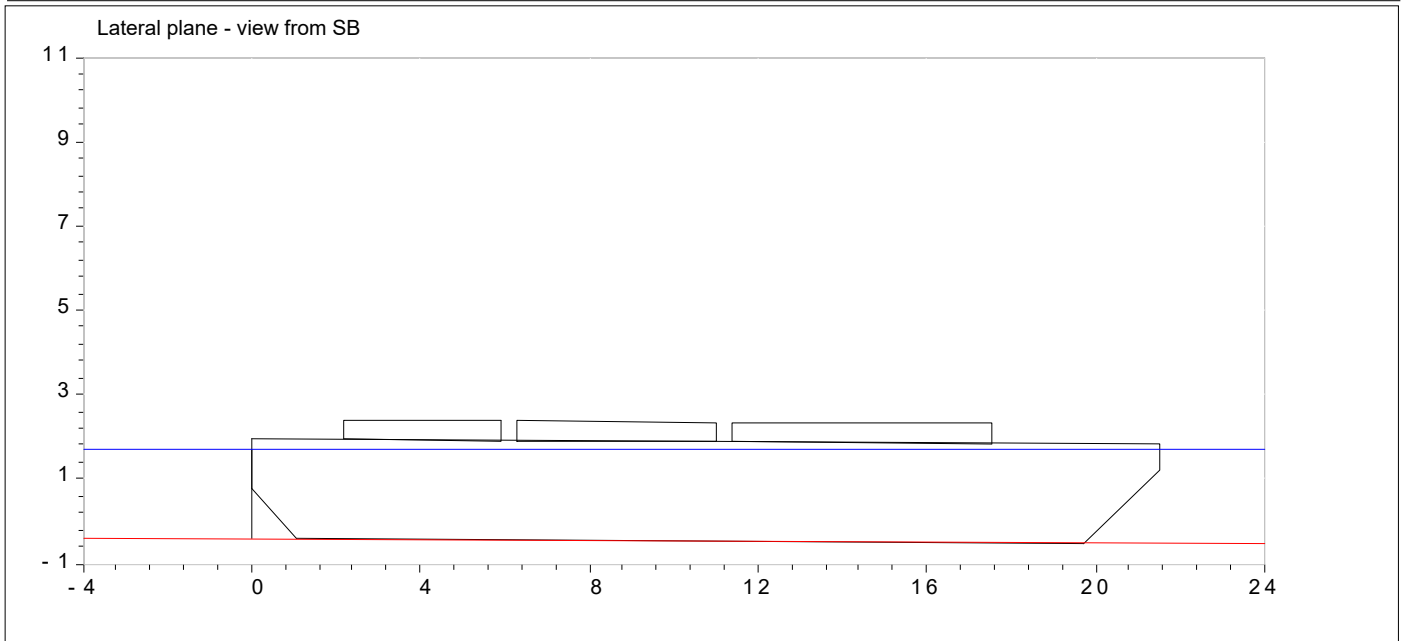
Transport 051 - LK 3604

Condition No: 6 : 10%tk.-Hom.lastet,dk.last 1.0m over dekk

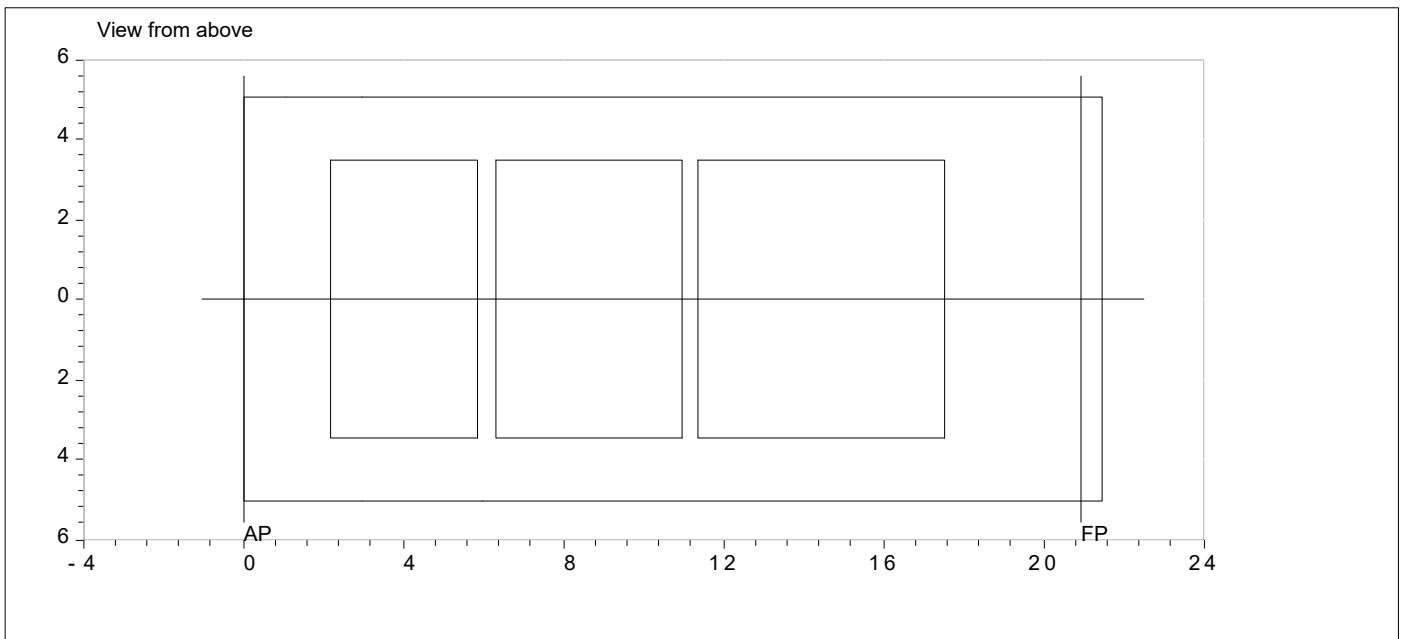
Water sp.gravity (t/m3) 1.0250 Intact ship SS=1-10, Shell=7

Date: 25 MAR 2025

App1=1-3, App2=0



DA= 2.094M MD= 2.350M(IN.S)
 DF= 2.205M TR= -0.111M
 DM= 2.150M Freeboard= 0.200M
 Margin draft= 0.200M [Moulded max. draft - Mean draft]



BA	(1.0000T/M3)	12.49T BRO/Ballast
DKL	(1.0000T/M3)	91.80T Dekkslast
LA	(1.0000T/M3)	195.00T Lasterom

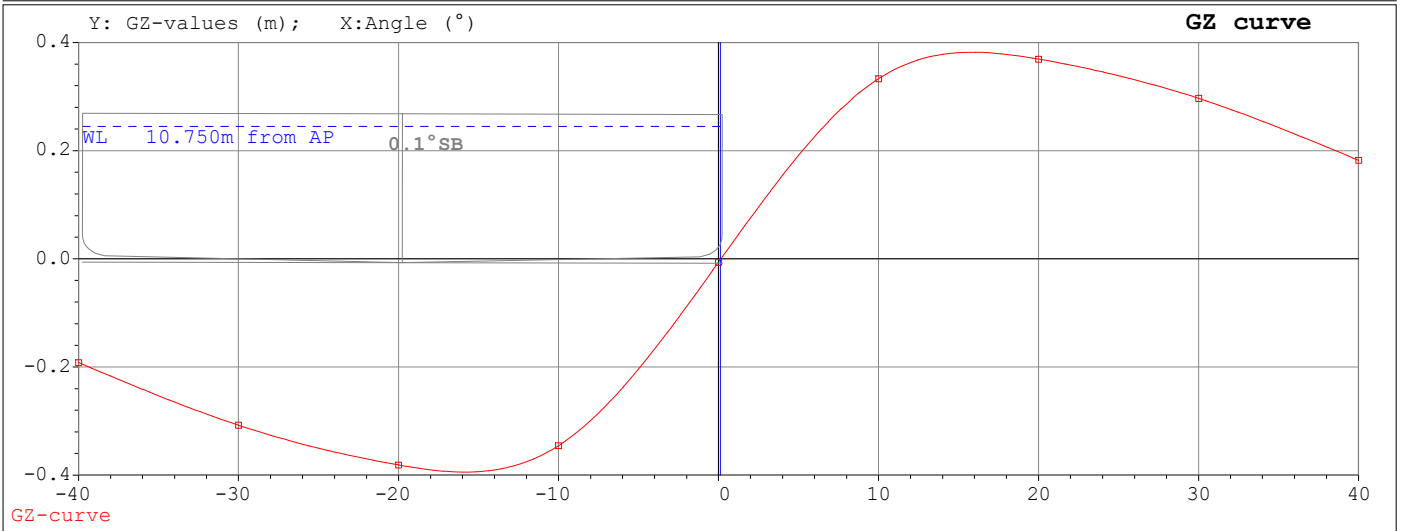
Transport 051 - LK 3604

Condition No: 6 :10%tk.-Hom.lastet,dk.last 1.0m over dekk

Water sp.gravity (t/m3) 1.0250 Intact ship SS=1-10, Shell=7

Date: 25 MAR 2025

App1=1-3, App2=0



Displ.=453.820T \LCG=10.554M \VCG=1.925M \TCG=0.006M
 GMT = 3.404M

Angles (-PS°)	GZ (M)	Angles (+SB°)	GZ (M)
0.0	-0.006	0.0	-0.006
-10.0	-0.346	0.1	Equilibrium
-15.8	-0.394*Max*	10.0	0.333
-20.0	-0.381	15.8	0.382*Max*
-30.0	-0.308	20.0	0.369
-40.0	-0.192	30.0	0.297
		40.0	0.182

Angles (-PS°)	Area (MR)
0.1 > -20	0.101
0.1 > -30	0.162
0.1 > -40	0.206
-30.0 > -40.0	0.044
0.1 > -15.8	0.072
Angles (+SB°)	Area (MR)
0.1 > 20	0.097
0.1 > 30	0.155
0.1 > 40	0.198
30.0 > 40.0	0.042
0.1 > 15.8	0.069

STABILITY CRITERIA: (Column WC="Worst Case" use: SB=SB, PS=PS or SP=SB&PS)
 Set name: INTACT: Barge (unmanned)

 Comment | Left/Expression | Value | R | Right/Req. | WC | OK/Not

Area (HA to GZMaxAngle) >|GetGZArea(HeelAngle,Min(GZMaxAngle,FloodAngle
 3))

0.0690 >= 0.0530 SB OK

Transport 051 - LK 3604

Condition No: 7 :10%tk.-Dekkslast 1.0m over dekk

Water sp.gravity (t/m3) 1.0250 Intact ship SS=1-10, Shell=7

Date: 25 MAR 2025

App1=1-3, App2=0

Pos	Description	TNo	TCode	DWc	Vol. (m3)	Spg. (t/m3)	Weight (t)	LCG (m)	VCG (m)	TCG (m)	Spg*IT (t*m)	Length (m)
1	10%BRO/Ball.			BA	12.49	1.0000	12.49	12.997	0.339	0.234	6.8	1.00
2	Dekkslast			DKL	239.00	1.0000	239.00	10.100	3.350	0.000	0.0	1.00

Dead weight: 251.49 10.244 3.200 0.012 6.8

Light ship: 154.53 10.421 1.748 0.000

TOTAL for the condition: 406.02 10.311 2.664* 0.007 ITc= 0.017

Description	Filling (%)	DWc	Volume (m3)	Spc.gr (t/m3)	Weight (t)	Description	Filling (%)	DWc	Volume (m3)	Spc.gr (t/m3)	Weight (t)
BRO/Ballast	10.0	BA	12.5	1.0000	12.5	Dekkslast	100.0	DKL	239.0	1.0000	239.0

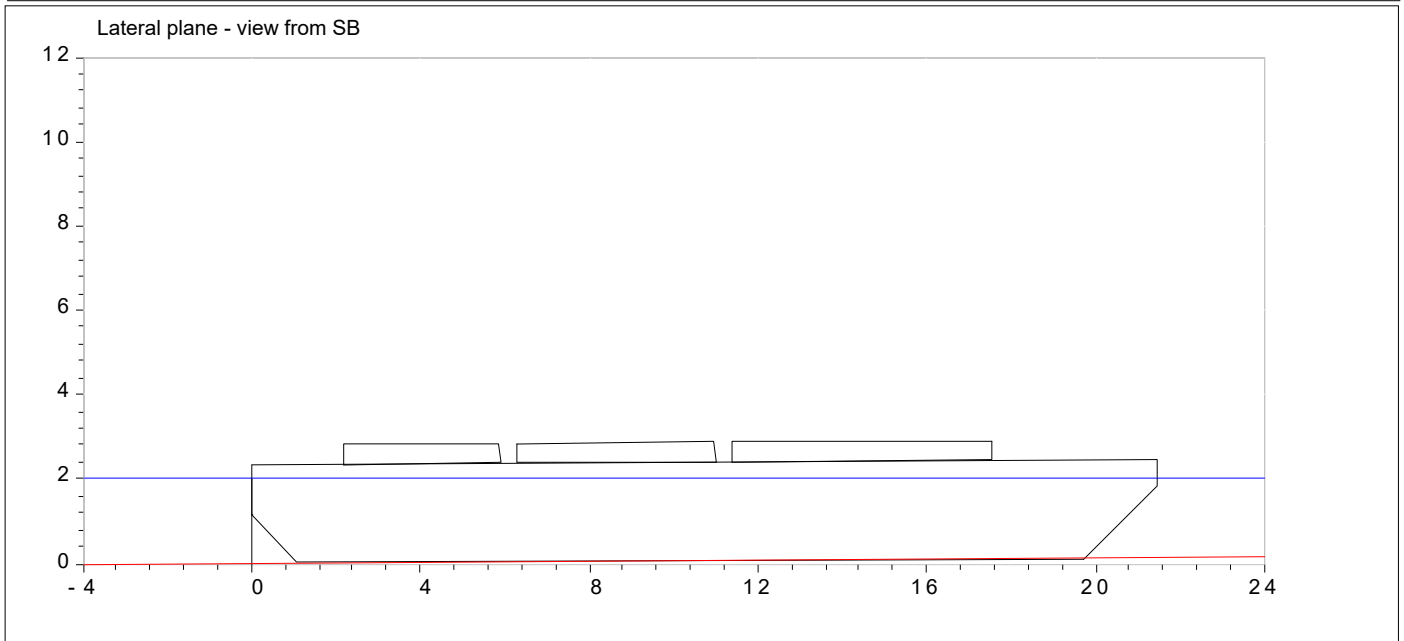
Condition's VCG (m): 2.664* (2.648 + 0.017) GMT (m): 3.047 KMT (m): 5.712

WATERLINE	DA (m)	DF (m)	MEAN (DA+DF)/2	TRIM (DA-DF)	HEELING (°SB/PS)	TPC (t/cm)	MCT1CM (tm/cm)	Wet Surf (m2)
Draft at MARK:	1.999	1.881						
Draft above BASE:	1.999	1.881	1.940	0.119	0.12 SB	2.24	4.12	286.86

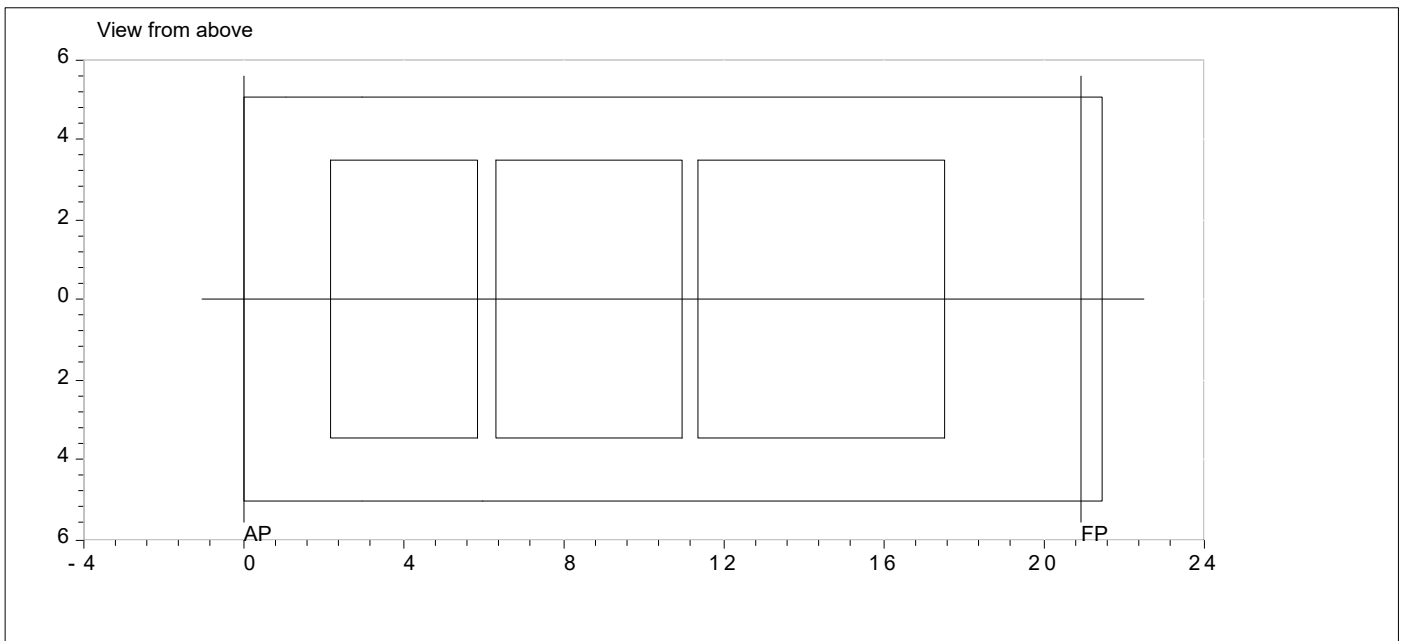
Transport 051 - LK 3604

Condition No: 7 : 10%tk.-Dekkslast 1.0m over dekk
 Water sp.gravity (t/m3) 1.0250 Intact ship SS=1-10, Shell=7
 App1=1-3, App2=0

Date: 25 MAR 2025



DA= 1.999M MD= 2.350M(IN.S)
 DF= 1.881M TR= 0.119M
 DM= 1.940M Freeboard= 0.410M
 Margin draft= 0.410M [Moulded max. draft - Mean draft]

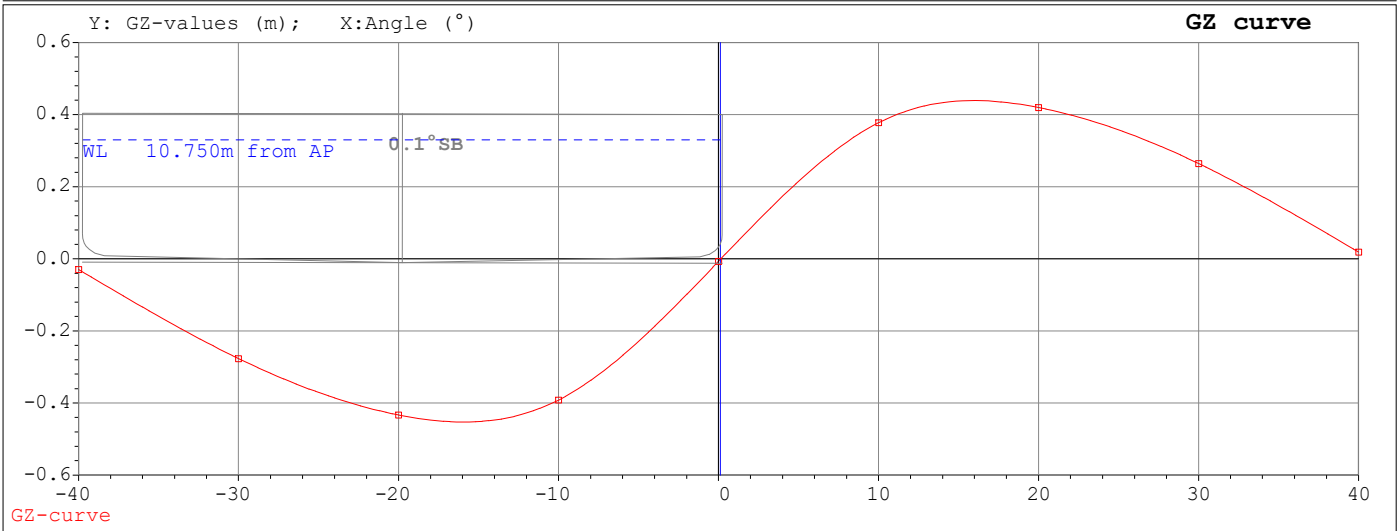


BA	(1.0000T/M3)	12.49T BRO/Ballast
DKL	(1.0000T/M3)	239.00T Dekkslast

Transport 051 - LK 3604

Condition No: 7 :10%tk.-Dekkslast 1.0m over dekk
 Water sp.gravity (t/m3) 1.0250 Intact ship SS=1-10, Shell=7
 App1=1-3, App2=0

Date: 25 MAR 2025



Displ.=406.020T \LCG=10.311M \VCG=2.665M \TCG=0.007M
 GMT = 3.047M

Angles (-PS°)	GZ (M)	Angles (+SB°)	GZ (M)
0.0	-0.007	0.0	-0.007
-10.0	-0.392	0.1	Equilibrium
-16.0	-0.453*Max*	10.0	0.377
-20.0	-0.433	16.0	0.439*Max*
-30.0	-0.277	20.0	0.420
-40.0	-0.030	30.0	0.264
		40.0	0.019

Angles (-PS°)	Area (MR)
0.1 > -20	0.115
0.1 > -30	0.179
0.1 > -40	0.206
-30.0 > -40.0	0.027
0.1 > -16.0	0.084
Angles (+SB°)	Area (MR)
0.1 > 20	0.110
0.1 > 30	0.171
0.1 > 40	0.197
30.0 > 40.0	0.025
0.1 > 16.0	0.080

STABILITY CRITERIA: (Column WC="Worst Case" use: SB=SB, PS=PS or SP=SB&PS)
 Set name: INTACT: Barge (unmanned)

 Comment | Left/Expression | Value | R | Right/Req. | WC | OK/Not

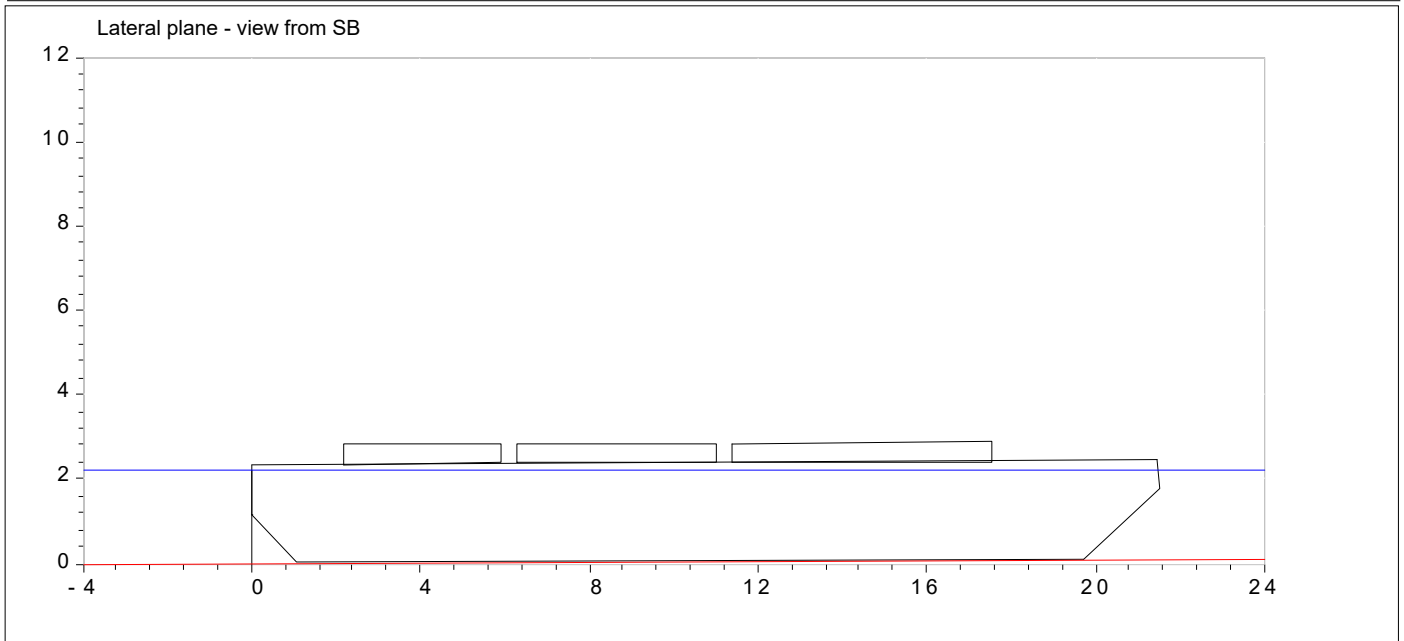
Area (HA to GZMaxAngle) > |GetGZArea(HeelAngle,Min(GZMaxAngle,FloodAngle
 3))

0.0795 >= 0.0530 SB OK

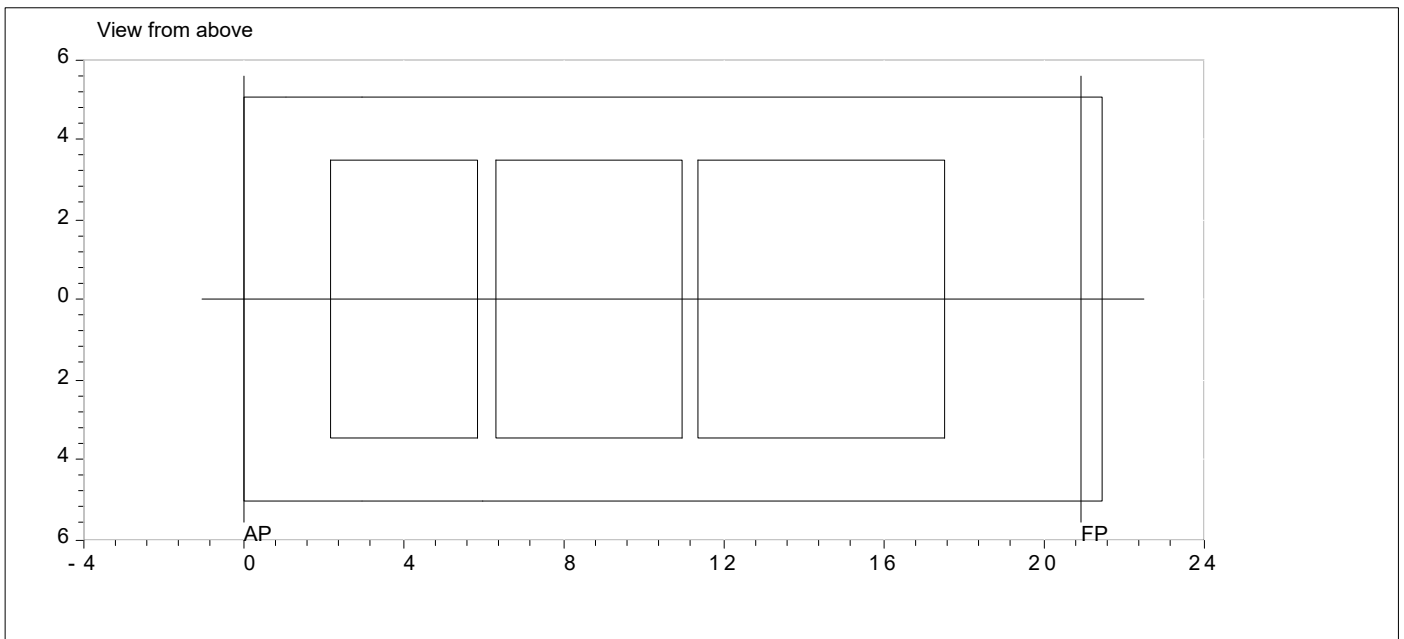
Transport 051 - LK 3604

Condition No: 8 : 100%tk.-Dekkslast 0,5m over dekk
 Water sp.gravity (t/m3) 1.0250 Intact ship SS=1-10, Shell=7
 App1=1-3, App2=0

Date: 25 MAR 2025



DA= 2.195M MD= 2.350M(IN.S)
 DF= 2.106M TR= 0.089M
 DM= 2.150M Freeboard= 0.200M
 Margin draft= 0.200M [Moulded max. draft - Mean draft]

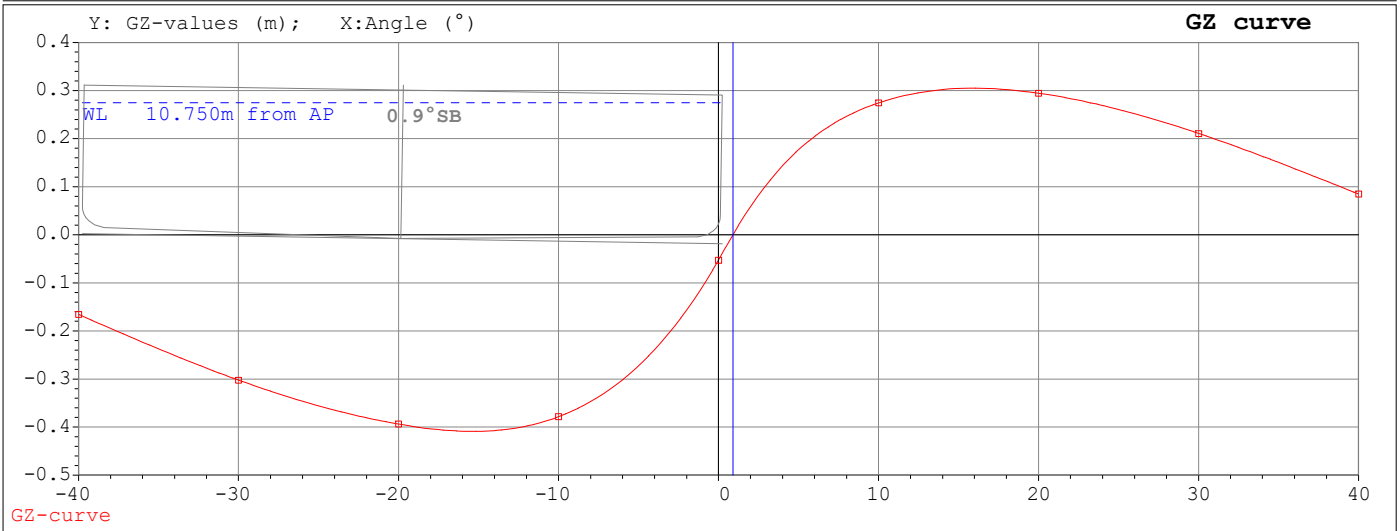


	BA (1.0000T/M3)	124.96T BRO/Ballast
	DKL (1.0000T/M3)	173.80T Dekkslast

Transport 051 - LK 3604

Condition No: 8 :100%tk.-Dekkslast 0,5m over dekk
 Water sp.gravity (t/m3) 1.0250 Intact ship SS=1-10, Shell=7
 App1=1-3, App2=0

Date: 25 MAR 2025



Displ.=453.290T \LCG=10.380M \VCG=2.032M \TCG=0.053M
 GMT = 3.302M

Angles (-PS°)	GZ (M)	Angles (+SB°)	GZ (M)
0.0	-0.053	0.0	-0.053
-10.0	-0.379	0.9	Equilibrium
-15.3	-0.409*Max*	10.0	0.274
-20.0	-0.394	15.9	0.305*Max*
-30.0	-0.302	20.0	0.294
-40.0	-0.166	30.0	0.211
		40.0	0.085

Angles (-PS°)	Area (MR)
0.9 > -20	0.115
0.9 > -30	0.176
0.9 > -40	0.218
-30.0 > -40.0	0.041
0.9 > -15.3	0.082
Angles (+SB°)	Area (MR)
0.9 > 20	0.079
0.9 > 30	0.124
0.9 > 40	0.150
30.0 > 40.0	0.026
0.9 > 15.9	0.058

STABILITY CRITERIA: (Column WC="Worst Case" use: SB=SB, PS=PS or SP=SB&PS)
 Set name: INTACT: Barge (unmanned)

Comment	Left/Expression	Value	R	Right/Req. WC	OK/Not
Area (HA to GZMaxAngle) > GetGZArea(HeelAngle,Min(GZMaxAngle,FloodAngle 3))		0.0577	>=	0.0530	SB OK

Transport 051 - LK 3604

Date: 25 MAR 2025

The list of used condition's types (CondType) inside CLAIMS

Type	Name
------	------

0	Not defined
---	-------------

Condition's type used in conditions

Type	Used in conditions
------	--------------------

0	1-8
---	-----
